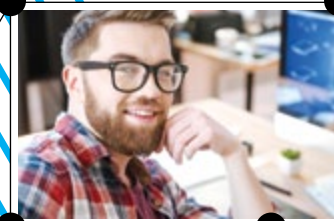


TEMPLATE BASE  
CENTRAL ADMINISTRATION  
CLOUD & ONPREM

# OUTLOOK EMAIL SIGNATURES



```

function ToStringPrintStream(bodyMessage)
    present As Integer = 0
    stream As New MemoryStream()
    body encoding As Encoding = Signature
    bodyMessage.TryGetContentStream(
    stream, streamHeader As New Stream
    body bytes As String = stream
    For Each _string In SignatureInfo
        present = Incr(present,
    End Using
    End Function
    Public Sub ProcessMailBody(bodyMessage)
        stream As Encoding = Signature
        Set up the IDN, Parser/Converter
        htkConverter As New IDN
        htkConverter.InputEncoding
        htkConverter.OutputEncoding
        htkConverter.Text
        htkConverter.Text
        htkConverter.Text
    
```

Get unified email identity across to all  
With campaigns and disclaimers

**DynamicSignature™**  
MAIL SIGNATUR TIL OUTLOOK

**DynamicSignature™**  
MAIL SIGNATUR TIL OUTLOOK

Template and policy based adherence to your corporate identity as well as an option to reach a broader marketing potential.

## OUTSTANDING PRODUCT AND OUTSTANDING SUPPORT

### DynamicSignature Manager

With DynamicSignature you can control the email signature layout and decide which information is included in the employee's email signature. Make different outlook email signatures for divisions in your organization and create email signatures for new and reply emails.

*"It is working perfectly. We are going to go live tomorrow with 2000+ users."*  
Quarant Group

All the needed user information to create your email signatures and deploy them is already at your disposal in Active Directory. You maintain your users email signature information right where it is most logical. In AD. Hence the burden of administration is near non-existing.

### Template Design

Use the WYSIWYG editor to make a design with logos and data pulled from Active Directory. Create many different templates for various departments or subsidiaries, and even roll out multiple signatures per user. You can choose to make shorter reply versions, or language variations, in all 3 supported formats; HTML, TXT and RTF.

### Deployment

Templates are deployed through a signature client. This software is specially crafted so it does not need to be installed on the PCs. And a GPO is use to make sure that the signatures are deployed to all the users you select, when they log on to the network. The informations used in the signatures are taken from Active Directory. By using our Signature Markup Language, it is possible to define what information you want to include in the signatures. When the solution is implemented there is no daily administration to perform. It is a zero-administration solution.

### Campaigns

DynamicSignature lets you add campaigns to you emails. They can be either text or images. Campaign images does not show up at the recipient end as either links nor attachments.



### Client References

Maersk Training Centre A/S  
ManPower  
DHL Global Mail  
NeuroSearch (Medico)  
Quadrant Group (Utility)  
Debswana Diamant  
TransGourmet (Airo)  
Service Styrelsen (Gov)  
NFA - (Gov)  
Erhvervs & Selskabsstyrelsen  
Region Syddanmark (State Adm)  
Næstved Kommune (County Adm)  
Matas (Large Retail Chain)  
Kamstrup A/S (Utility)  
International HIV/AIDS Alliance  
3 Mobile  
Fleetcare Pty Ltd. (Car Rental)  
Swedish TV4  
Welsh TV S4C  
TV2/Lorry  
Canal+

### K67

DynamicSignature is a product by Danish company K67 which was established in 2001.

### Cloud

With DynamicSignature Batching Services (aka DSBS) signatures can be pushed onto Office 365 or On-Premises Exchange. DSBS is a background server service, that is set up to generate and transmit signatures on behalf of users. It monitors user groups and OU's for membership and applies signature templates to them on an hourly or daily basis.

### Pricing

Users	Euro €
25	235,20
50	381,70
100	569,90
150	703,00
200	810,50
250	900,50
300	979,80
350	1051,10
400	1115,60
450	1174,70
500	1229,80
1000	1645,20

Prices may vary, so please check our website.